

State of Wyoming Corner Record

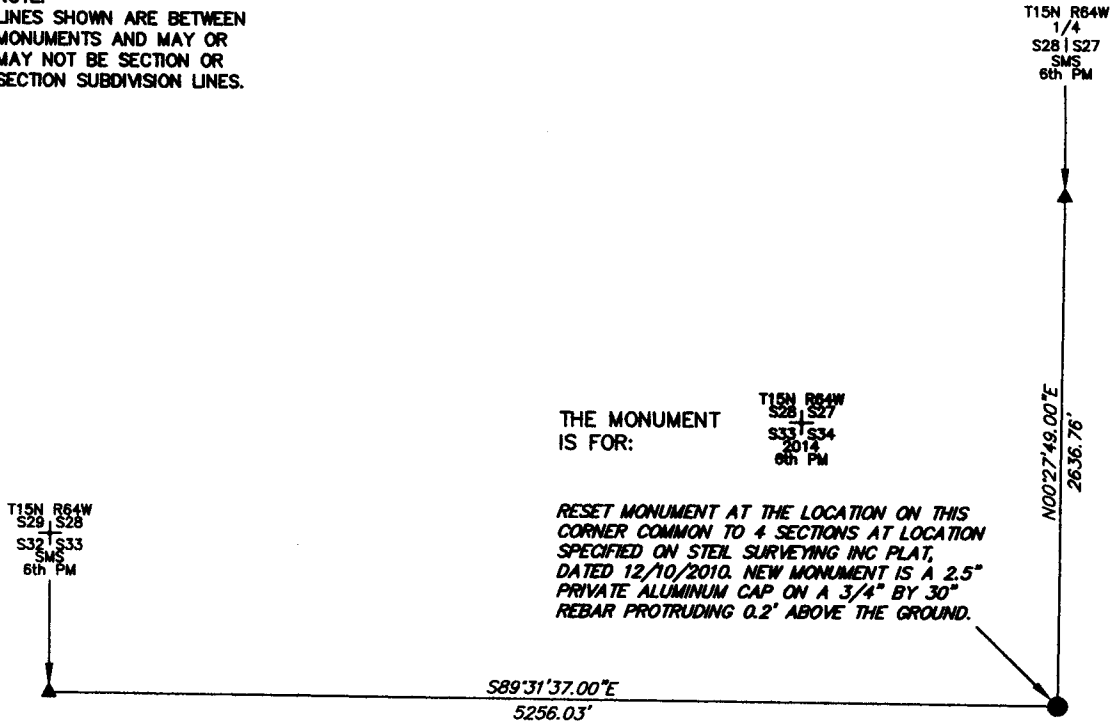
CORNER PERPETUATION AND FILING ACT.

Regulations of the Board of Registration for Professional Engineers and Land Surveyors.)

Reverse side of this form may be used if more space is needed.

Record of original survey and citation of source of historic information (if corner is lost or obliterated). Description of corner monumentation evidence found and/or monument and accessories established to perpetuate the location of this corner. Sketch of relative location of monument, accessories, and reference points with course and distance to adjacent corner(s) (if determined in this survey). Method and rationale for reestablishment of lost or obliterated corner.

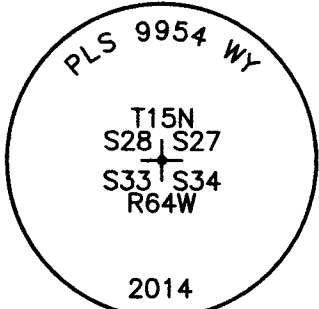
NOTE:
LINES SHOWN ARE BETWEEN
MONUMENTS AND MAY OR
MAY NOT BE SECTION OR
SECTION SUBDIVISION LINES.



THE MONUMENT
IS FOR:

T15N R64W
S28 | S27
S33 | S34
2014
6th PM

RESET MONUMENT AT THE LOCATION ON THIS
CORNER COMMON TO 4 SECTIONS AT LOCATION
SPECIFIED ON STEEL SURVEYING INC PLAT,
DATED 12/10/2010. NEW MONUMENT IS A 2.5"
PRIVATE ALUMINUM CAP ON A 3/4" BY 30"
REBAR PROTRUDING 0.2' ABOVE THE GROUND.



CORNER MONUMENT SYMBOLS

- RECORD IS FOR THIS CORNER MONUMENT.
- ▲ A RELATED CORNER OR WC MONUMENT.

SCALE 1"=1000'
(EXCEPT IN TRIVIAL CASES)
BEARINGS ARE RELATED TO WGS 84 WITH GPS OBSERVATIONS
DRAWN BY: SM
P.C. T. BEASLEY
COUNTY: LARAMIE

THE MONUMENT IS MARKED

Date of Field Work: 09/30/2014 Office Reference: _____

CROSS INDEX DIAGRAM

1	2	3	4	5	6	7	8	9	10	11	12	13	14	15	16	17	18	19	20	21	22	23	24	25		
A																										
B																										
C	6	5	4	3	2	1																				
D																										
E																										
F																										
G	7	8	9	10	11	12																				
H																										
J																										
K																										
L	18	17	16	15	14	13																				
M																										
N																										
O																										
P	19	20	21	22	23	24																				
Q																										
R																										
S																										
T	30	29	28	27	26	25																				
U																										
V																										
W																										
X	31	32	33	34	35	36																				
Y																										
Z																										

Firm/Agency, Address

UELS, LLC

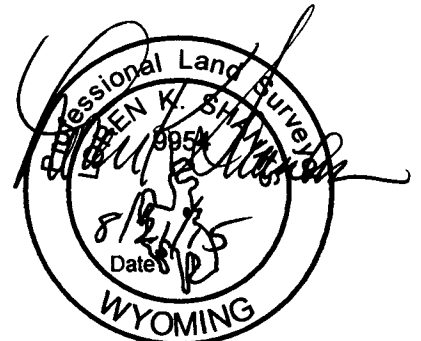
85 South 200 East

Vernal, Utah 84078

Telephone Number: 435-789-1017

This corner record was prepared by me or under my direction and supervision.

SEAL & SIGNATURE



RECP #: 670099

RECORDED 9/22/2015 AT 10:42 AM BK# 2465 PG# 107
Debra K. Lathrop, CLERK OF LARAMIE COUNTY, WY PAGE 1 OF 1